



# Crosswalk



T2110 Crosswalk (1909 Abalone)

With a color palette of 12 beautiful shades and a robust 50 oz. face weight, Crosswalk is designed to infuse your home with both style and comfort, and is constructed of 100% solution dyed Primus PET Fiber.

## PRODUCT SPECIFICATIONS

<b>Style #:</b>	T2110
<b>Colors:</b>	12
<b>Fiber:</b>	100% Solution Dyed Primus® PET Continuous Filament, Non-fuzzing Fiber
<b>Gauge:</b>	1/10 Gauge - High Gauge Construction
<b>Protection:</b>	3M Scotchgard™ Protected
<b>Pile Weight:</b>	50 oz.
<b>Pattern Repeat:</b>	18" x 26"
<b>Width:</b>	12'

## COLORS

1901 Porcelain	1905 Solitude	3538 Granite
1902 Alabaster	1906 Steele	3913 Cashmere
1903 Powder Gray	1907 Mink	4171 Haylo
1904 Parchment	1909 Abalone	4590 Serenity

## WARRANTY



STAIN



PET URINE



SOIL



ABRASIVE WEAR



TEXTURE RETENTION



MANUFACTURING DEFECTS



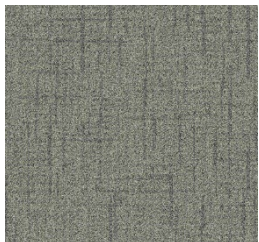
## Tarkett North America

285 Kraft Drive  
Dalton, GA 30721  
USA: 800-871-3211

[www.tarkettna.com](http://www.tarkettna.com)

# T2110 Crosswalk

## Existing Color Line:



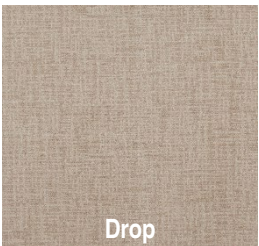
3538 Granite



3584 Driftscape



3788 Sand Dunes



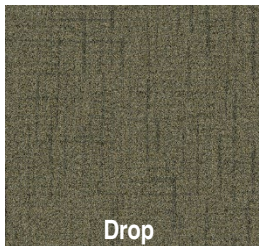
3793 Oats



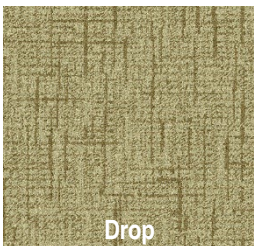
3913 Cashmere



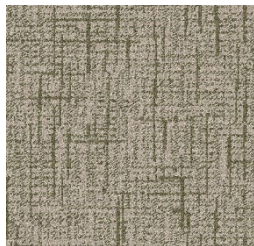
4171 Haylo



4180 Tranquility



4583 Sandstone



4590 Serenity

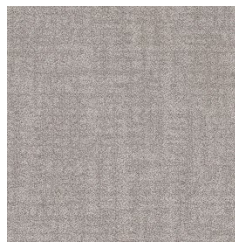
## New Color Line:



1901 Porcelain



1902 Alabaster



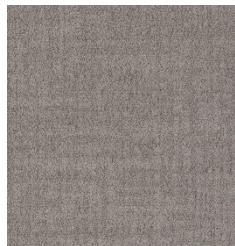
1903 Powder Gray



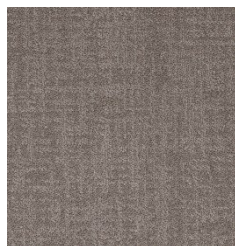
1904 Parchment



1905 Solitude



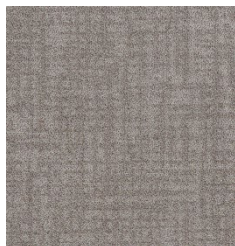
1906 Steele



1907 Mink



1909 Abalone



3538 Granite



3913 Cashmere



4171 Haylo



4590 Serenity