



## FIBERFLOOR® SHEET VINYL INSTALLATION INSTRUCTINS

### INTRODUCTION

These instructions are written as a guide to be used when installing Tarkett FiberFloor®. These instructions, combined with our adhesives and flooring products, create a system. Utilizing this system will ease the installation process and provide the customer with a completed product that will perform to its intended purpose. Always visit [www.tarkettna.com](http://www.tarkettna.com) for the most current installation and maintenance instructions. Technical videos and tip sheets are also available. Contact Tarkett Technical Services at (800)-899-8916 with any questions.

### GENERAL INFORMATION

1. Carefully check flooring material for any defects. Contact your supplier immediately if any defect is found.
2. Tarkett floors are intended for indoor use only.
3. FiberFloor can be installed in cabins or vacation homes that may not receive permanent HVAC climate control. See special instructions at the end of this document to ensure a successful installation.
4. All Tarkett products, flooring and adhesive must be stored in an indoor climate controlled space and be protected from the elements. Temperature must be maintained between 65°F and 85°F (18.3°C and 29.4°C) with a relative humidity 40% and 60%
5. FiberFloor must be acclimated at room temperature between 65°F and 85°F (18.3°C and 29.4°C) for 48 hours before, during and after the installation.
6. Exposure to direct sunlight can result in products fading and creates excessive heat directly on the finished flooring and surrounding structure, which may result in movement. During peak sunlight exposure, the use of drapes or other window treatments are recommended.
7. Rolls must be stored horizontally on smooth surface supporting the entire width of the roll at all times prior to the installation.
8. FiberFloor must be rolled on a sturdy core, design in or design out, when transporting to the jobsite.
9. Protect rolls from damage.
10. Remove all transitions, quarter round, baseboard molding or cove base prior to beginning the installation.
11. Tarkett ProSheet™ Plus 3 is an approved underlayment for use with FiberFloor in on or above grade applications. Do not use ProSheet Plus 3 below grade.
12. Tarkett recommends using **Tarkett Q-Bond One™** or **959™ Vinyl Plank & Tile** adhesive with installing this flooring product as a Full Spread method. Issues associated with the use of non-recommended adhesives are excluded from Tarkett's limited warranty. See complete Limited Warranty for details.

### WOOD SUBSTRATES

FiberFloor may be installed over single layer wood construction in **residential applications only**, when used with ProSheet Plus 3™ underlayment. Follow the detailed ProSheet Plus 3 installation instruction found at [www.tarkettna.com](http://www.tarkettna.com)

Wood subfloors must meet the following requirements:

1. Wood joist or truss systems spacing must be a maximum of 16" on center when installing over single layer wood construction.
2. Wood joist or truss systems spacing of 16"-19.2" is acceptable for double layer wood construction.
3. Subfloor panels must be dry, sturdy, smooth, dimensionally stable and structurally sound.
4. Subfloor panels must be 3/4" minimum thickness tongue and groove plywood or oriented strand board (OSB).
5. Plywood subfloor panels must consist of a solid core (no voids).
6. Subfloor panels must be exterior grade or classified as Exposure I.
7. All suspended wood subfloors must have at least 18" of well-ventilated air space clearance above the ground. The ground under the crawlspace shall be covered with 10 mil or thicker polyethylene sheeting to reduce moisture vapor transmission.
8. Offset subfloor panel joints by at least 16" so that four corners do not meet.
9. Subfloor panels must be securely fastened to the joists and free from spring or deflection. If glue-nail procedures are required, use solvent free construction adhesives.

**Wood subfloors not meeting the above requirements must be covered with 1/4" minimum thickness underlayment grade plywood. Follow all APA and manufacturer's guidelines for installing underlayment grade plywood.**

Tarkett recommended underlayments include:

- APA Underlayment Grade Plywood A-C, B-C, or C-C Plugged
- ACCU-PLY
- SurePly
- TecPly
- ULAY
- C.S.A (CanPly) and Proboar

## CONCRETE SUBSTRATES

1. FiberFloor may be installed over properly constructed and prepared on-grade, above-grade or below-grade concrete subfloors.
2. Concrete subfloors must be constructed as recommended by the American Concrete Institute's ACI 302.2 *Guide for Concrete Slabs that Receive Moisture-Sensitive Flooring Materials*.
3. Prepare concrete subfloors according to ASTM F710 *Standard Practice for Preparation of Concrete Floors to Receive Resilient Flooring*. The surface of the concrete must be dry, clean, smooth, and structurally sound. The slab must be swept, damp mopped and/or vacuumed to remove any dust. Any surface materials present such as loose paint, wax, grease, oil, adhesive residues, crayon, pen marking, etc., that may prevent a proper adhesion or migrate to the surface of the flooring causing discoloration, must be removed. Fill and level any cracks, construction joints, control joints, depressions, grooves or other irregularities with a high quality, non-shrinking, latex-fortified, cementitious patching compound. For substrates with high moisture content, contact the major patching compounds manufacture for detailed installation instructions.
4. Do not install Tarkett FiberFloor flooring over expansion joints, or other moving joints in the substrate. These joints must be respected and should not be filled with products that are not intended for that purpose. Contact an expansion joint cover manufacturer to meet specific flooring conditions.
5. Moisture testing of concrete subfloors must be performed in accordance with ASTM F1869 *Standard Test Method for Measuring Moisture Vapor Emission Rate of Concrete Subfloor Using Anhydrous Calcium Chloride* and ASTM F2170 *Standard Test Method for Determining Relative Humidity in Concrete Floor Slabs Using in situ Probes*.

When installing FiberFloor using the FLOATING INSTALLATION SYSTEM, do not install if the values are greater than 8 lbs./1000 ft<sup>2</sup>/24hrs per ASTM F1869 or 90 %RH per ASTM 2170.

When installing FiberFloor using the FULL SPREAD-PERMANENT or RELEASABLE APPLICATION refer to the moisture limitations on the Q Bond One or 959 Vinyl and Plank adhesive pail label. If the tests results exceed the limitations, the installation must not proceed until the problem has been corrected.

6. Tarkett does not recommend or warrant any particular product or procedure for the remediation of high moisture in concrete substrates. Several companies manufacture products suitable for moisture remediation. We suggest you refer to the current ASTM F 710 *Standard Practice for Preparing Concrete Floors to Receive Resilient Flooring* and ASTM F 3010 *Standard Practice for Two Component Resin Based Membrane-Forming Moisture Mitigation Systems for Use Under Resilient Flooring Systems*.
7. pH testing of concrete subfloors must be performed in accordance with ASTM F710 *Standard Practice for Preparing Concrete Floors to receive Resilient Flooring*.

When installing FiberFloor using the FLOATING INSTALLATION SYSTEM the concrete surface pH should be between 7 - 9.

When installing FiberFloor using the FULL SPREAD-PERMANENT or RELEASABLE APPLICATION refer to the substrate pH limitations on the Q Bond One or 959 Vinyl and Plank adhesive pail label.

## ADDITIONAL SUBFLOOR GUIDELINES

Many installations over existing floors produce satisfactory results. However, their success is dependent upon the condition of the existing floor covering. Installing over existing flooring increases the possibility of indentations and telegraphing of the old floor. **NOTE:** The final decision to cover an existing floor with new flooring rests with the flooring contractor and/or installer. Tarkett will not accept responsibility for floor failures where the condition, type or improper preparation of the existing floor is the cause for the failure. When installing FiberFloor over an existing flooring follow the recommended guidelines below.

1. Minimum temperature of the substrate must be 60°F (15.6 °C). Substrate temperature should be a minimum of 5°F higher than the dew point temperature.
2. **Ceramic, Porcelain and Natural Stone** tiles must be smooth, even and well bonded with a grout line depth less than 1/16" (.625). If grout joint depth exceeds the maximum allowable depth, fill with Portland based patching compound following manufacturer's guidelines. Installing FiberFloor over existing Ceramic, Porcelain and Natural Stone tiles is only recommended when using the floating installation method. If a glue-down installation method is desired contact Tarkett Technical Services.
3. **Resilient Vinyl floors** must be smooth, even, non-cushioned and well bonded to the substrate.
4. **Strip Wood Hard Wood Floors** must be smooth, even, flat, with a maximum gap width between boards of 1/16" (.625). Installing FiberFloor over Strip Wood Floors is only recommended when using the floating installation method. The use of ProSheet Plus3 is recommended. : Follow the detailed ProSheet Plus 3 installation instructions found at [www.tarkettna.com](http://www.tarkettna.com)
5. **Heated flooring systems** must be installed 2" below the concrete subfloor and the operating temperature must not exceed 85°F (29.4°C). During installation, lower the radiant heated floor temperature to a minimum 65° F (18.3° C). This temperature should be maintained for at least 24 hours before, during and 48 hours after completion of the installation. Gradually increase the temperature in increments of 5°F every 24 hours but do not exceed 85°F (29.4°C).
6. **Residual adhesives** should be mechanically removed. Do not use chemical adhesive removers or solvents. Always follow RFCI's *Recommended Work Practices for Removal of Resilient Floorcoverings*. Caution: Some resilient flooring products and adhesives contain "asbestos fibers" and special handling of this material is required.
7. **Gypsum:** Refer to ASTM F2419 *Standard Practice for Installation of Thick Poured Gypsum Concrete Underlayments and Preparation of the Surface to Receive Resilient Flooring* for guidelines when pouring gypsum underlayments or preparing for use as an underlayment under Tarkett products. Follow the Gypsum Underlayment manufacturer's recommendations for proper application and preparation.

**WARNING: Do not sand, dry sweep, dry scrape, drill, saw, bead blast or mechanically chip or pulverize existing resilient flooring, backing, lining felt, or asphaltic "cutback" adhesive. These products may contain asbestos fibers or crystalline silica. Avoid creating dust. Inhalation of such dust is a cancer and respiratory tract hazard. Smoking by individuals exposed to asbestos fibers greatly increases the risk of serious bodily harm. Unless positively certain that the product is a non-asbestos containing material, you must presume it contains asbestos. Regulations may require that the material be tested to determine asbestos content.**

## SUBSTRATE PREPARATION

1. All substrates must be dry, clean, structurally sound, smooth and free from all existing adhesive residues.
2. The substrate must be flat within 1/8" in 8' (3.17mm in 2.4m).
3. Fill and level concrete cracks, construction joints, control joints, depressions, grooves and other irregularities. Use a latex fortified, cementitious patching compound and follow the manufacturer's recommendation for preparing.
4. Sweep and vacuum or damp mop substrate to remove all dust and debris.
5. ProSheet Plus 3 can be used if needed in on or above grade applications only. Follow the detailed ProSheet Plus 3 installation instructions found at [www.tarkettna.com](http://www.tarkettna.com)
6. Prior to removing an existing floor, follow the RFCI's *Recommended Work Practices for Removal of Resilient Floor Coverings* (unless state or local law requires other measures). If there are visible indications of mold or mildew or the presence of a strong musty odor in the area where resilient flooring is to be removed or installed, the source of the problem should be identified and corrected before proceeding with the flooring work. The EPA mold guidelines are contained in two publications, *A Brief Guide to Mold, Moisture and Your Home* (EPA 402-K-02-003) and *Mold Remediation in Schools and Commercial Buildings* (EPA 402-K-01-001). Appendix B of the *Mold Remediation in Schools and Commercial Buildings* publication describes potential health effects from exposure to mold, such as allergic and asthmatic reactions and irritation to eyes, skin, nose and throat. These publications can be located on EPA's Website at [www.epa.gov/iaq/molds/](http://www.epa.gov/iaq/molds/)

## GETTING STARTED

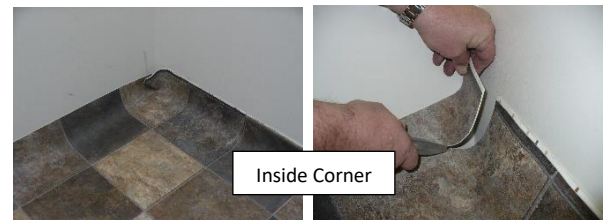
FiberFloor floors may be installed using the Floating, Full Spread Permanent Bond, or Full Spread Releasable Bond installation methods.

- A. For the Full Spread Permanent method**, apply Q-Bond One or 959 Vinyl Tile and Plank Adhesive using a 1/32"x1/16"x1/32" U notch trowel, allowing the adhesive to reach a semi-wet state with adhesive transfer to the finger with a light touch.
  - B. For the Full Spread Releasable method**, apply Q Bond One only using a medium nap paint roller, allowing the adhesive to dry to the touch with no transfer to finger.
  - C. For the Floating method:**
    - Do not install fixed cabinets over FiberFloor.
    - A minimum 1/4" (6.3mm) expansion space is required around all walls and fixed, vertical objects. Allow a 1/2" (12.7mm) expansion space for installations over wood substrates that may be effected by moisture or external temperature and humidity fluctuations (i.e. crawlspaces, mobile homes).
1. If distortions are noticed in the flooring prior to installation, reverse roll the flooring on a core and allow it to remain for 15 minutes to remove the distortions.
  2. Inspect FiberFloor for visible defects and damage before and during installation. Do not install damaged material. Tarkett will not accept responsibility for claims on flooring installed with obvious defects. Contact your supplier immediately if a defect is found.
  3. FiberFloor must be acclimated at room temperature for 48 hours prior to the installation.
  4. Room temperature must be maintained between 65°F and 85°F (18.3°C–29.4°C) with a relative humidity between 40% to 60% for 48 hours before and during, and 48 hours after the installation.
  5. Minimum temperature of the substrate must be 60°F (15.6 °C). Substrate temperature should be a minimum of 5°F higher than the dew point temperature.
  6. Undercut door way moldings to the thickness of the flooring.
  7. ProSheet Plus 3 can be used if needed in on or above grade applications only. Follow the detailed ProSheet Plus 3 installation instructions found at [www.tarkettna.com](http://www.tarkettna.com)

## INSTALLATION

### All Methods

1. Measure the room and precut the flooring allowing 3" extra material for trimming.
2. Unroll the flooring and position in the room so the pattern is aligned squarely with walls.
3. Allow flooring to relax for 20 minutes. Material shall be lying completely flat before fitting.
4. Using a sharp, sturdy utility knife, make relief cuts at inside and outside corners.
5. Trim the flooring around the edges of the room.
  - **FLOATING METHOD ONLY:** When fitting flooring, leave a 1/4" space between flooring and all verticals (i.e. walls, cabinets, pipes, etc.). Leave a 1/2" gap for floors installed over wood substrates that have a potential of being exposed to high moisture levels (i.e. crawl spaces, mobile homes).
  - When installing in a full bathroom, the flooring may be fit net against the bathtub or shower stall. Apply Tarkett S 860™ Seam Tape along the front of the tub or stall. Remove the release liner and fit the flooring net against the tub or stall. The remaining walls and toilet flange must have the 1/4" space. Apply a bead of silicone caulking in front of bathtub.
  - **FULL SPREAD METHODS ONLY:** FiberFloor can be cut net to all vertical surfaces. **NOTE: Do not cut too tight which may cause a compression fit.**



Inside Corner



Outside Corner



Full Spread Methods  
Material cut Net



Floating Method Perimeter  
Expansion Space

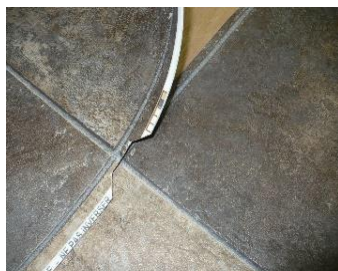
6. Slide flooring underneath the undercut door casings, maintaining the ¼" spacing for expansion gap on Floating Method installations.
7. Continue to the Double Cut Procedure if your flooring has a seam. If your flooring does not require a seam:
  - **FLOATING METHOD:** Your installation is complete.
  - **FULL SPREAD METHODS:** Continue below to the applicable Permanent or Releasable Installation Instructions.

### Seaming – Double Cut Procedure (For All Installation Methods)

If your flooring does not require a seam, continue to applicable bond method below.

1. After first piece of flooring is positioned, cut second piece of flooring. Be sure to allow extra material for pattern match.
2. Overlap seam edges and obtain exact pattern match. An exact pattern match on a **Do Not Reverse** pattern is achieved by overlapping a Square and a Circle from the selvage mark, and on a **Reverse** pattern by overlapping a Square with a Square or a Circle with a Circle.
  - **PRO TIP:** Cutting a “window” out of the top sheet will help align grout lines or board markings.
3. After exact pattern match to the first sheet is achieved, cut the second sheet to fit the room.
4. Place masking tape at seam overlap to prevent flooring from moving.
5. Using a pencil, create a Match Mark across both pieces of vinyl. This mark will be used to realign the sheets after double cutting.
6. Lay a straight edge along center of seam overlap or grout line. Using the straight edge as a guide, double cut through both sheets of flooring with a sharp, sturdy utility knife held to produce a vertical cut. Do not tilt knife blade. When installing over an existing floor, do not cut into the existing flooring.
7. Lift top edge of flooring and carefully remove bottom salvage and the masking tape.

#### Double Cut Procedure



### Seaming – Floating Method:

1. After double-cut procedure, place Tarkett S-875™ Floating Seam Tape, positioning it centered under both sides of the sheet..
2. Remove the release liner from the side with the larger, main piece of flooring, pulling it down and away at a 45° angle. Roll the flooring with a hand roller to ensure bond with the seam tape.
3. Position your fill piece over the portion of the seam tape that still has release liner. Realign your Match Marks to ensure the sheets are back in position. Remove the remaining release liner with the same motion, pulling down and away at a 45° angle. Roll the seam with a hand roller to ensure bond.
4. Remove the Match Marks with a pencil eraser. The lead from a pencil can contaminate the seam sealer if not fully removed.
5. Seal seams.
  - a. All seams on Tarkett FiberFloor must be sealed. Detailed application instructions are in the DT-65 kit.
  - b. Seal seams with Tarkett DT-65 Seam Sealer. Protect seam from traffic for a minimum of 8 hours.



### Seaming – Full Spread Methods

Seams are double-cut prior to the application of any adhesive.

1. After double-cut procedure, realign your Match Marks to ensure the sheets are back in position.
2. Mark substrate along seam edge with pencil. Do not contaminate flooring seam edge with the lead in the pencil as it can contaminate seam sealer.
3. Fold or tube both pieces of flooring back to expose entire seam area.
4. Apply Tarkett S-860 Seam Tape to the substrate, so that it is centered over pencil line.
5. Apply adhesive according to your selected bonding method:

### **FOR PERMANENT BOND METHOD:**

- a. Fold or tube larger, main piece of flooring back to the half-way point of room, and remove fill piece from area.
- b. In an area starting from the closest wall to the seam to about 1' out from the seam, apply Q-Bond One or 959 Vinyl and Plank adhesive with a 1/32" deep x 1/16" wide x 1/32" apart notched trowel evenly over the entire exposed substrate and S-860 seam tape.
- c. Remove release liner from seam tape, being careful not to disturb the applied adhesive.
- d. Finish applying the adhesive onto the rest of the exposed subfloor.
- e. Allow the adhesive to reach a semi-wet state with adhesive transfer to the finger with a light touch.
- f. Carefully walk or roll the larger, main piece of flooring into the adhesive.
- g. Place the fill piece into the adhesive.
- h. Realign Match Marks on the surface of the vinyl so that the seam is back in its original position. Once aligned, remove the Match Marks with a pencil eraser as the lead can contaminate the seam sealer.
- i. Fold or tube the remaining un-adhered half of the flooring back to the half-way point of the room.
- j. Repeat steps d. and e. above to complete adhesive application and laying the remaining flooring in.

### **FOR RELEASABLE BOND METHOD:**

- a. Fold or tube larger, main piece of flooring back to the half-way point of the room, and remove fill piece from the area.
  - b. In an area starting from the closest wall to the seam to about 1' out from the seam, apply Q-Bond One adhesive evenly using a medium nap paint roller designed for smooth surfaces over the exposed substrate and S-860 seam tape.
  - c. Remove release liner from seam tape, being careful not to disturb the applied adhesive.
  - d. Finish applying the adhesive onto the rest of the exposed subfloor.
  - e. Allow adhesive to dry until tacky to the touch, but does not transfer to the fingers. Dry time will vary depending on the porosity of the substrate, temperature and humidity. Flooring must be placed into adhesive within one hour of becoming tacky. Do not walk on applied adhesive as this can deaden the bond. Avoid trapping air beneath the sheet.
  - f. Carefully position larger, main piece of flooring so that it aligns with the center of the S-860 seam tape. **NOTE: While the Q-Bond is releasable, the dry-set application will grab the material and require full removal to reposition.**
  - g. Place the fill piece into the adhesive.
  - h. Confirm Match Marks on the surface of the vinyl are aligned. If they are not aligned, the fill piece will need to be fully removed and repositioned before laying back into the adhesive. Once aligned, remove the Match Marks with a pencil eraser as the lead can contaminate the seam sealer.
  - i. Fold or tube remaining un-adhered half of the flooring back to the half-way point of the room.
  - j. Repeat adhesive application from steps b. and d. above for the remainder of the substrate.
  - k. Carefully walk the flooring into the adhesive.
6. Roll flooring with a minimum 75 lb. (34 kg) sectional floor roller.
7. Seal seams.
- a. All seams on Tarkett FiberFloor must be sealed. Detailed application instructions are in the DT-65 kit.
  - b. TARKETT DT-65 SEAM SEALER – For use on all products with low gloss vinyl or urethane finish.
  - c. Seal seams with Tarkett DT-65 Seam Sealer. Protect seam from traffic for a minimum of 8 hours.

### **Permanent Bond Method with no seams**

1. Fold or tube one half of flooring back to the half-way point of room.
2. Starting from the wall and working to the halfway point, apply Q-Bond One or 959 Vinyl and Plank adhesive with a 1/32" deep x 1/16" wide x 1/32" apart notched trowel evenly over the entire exposed substrate.
3. Allow the adhesive to reach a semi-wet state with adhesive transfer to the finger with a light touch.
4. Carefully walk or roll the flooring into the adhesive.
5. Fold or tube the remaining un-adhered half of the flooring back to the half-way point of the room.
6. Repeat steps 2 through 4 above to complete adhesive application and laying the remaining flooring.
7. Roll flooring with a minimum 75 lb. (34 kg) sectional floor roller.

### **Releasable Bond Method with no seams**

1. Fold or tube half of flooring back to the half-way point of the room.
2. Starting from the wall and working to the halfway point, apply Q-Bond One adhesive evenly using a medium nap paint roller designed for smooth surfaces over the exposed substrate and S-860 seam tape.
3. Allow adhesive to dry until tacky to the touch, but does not transfer to the fingers. Dry time will vary depending on the porosity of the substrate, temperature and humidity. Flooring must be placed into adhesive within one hour of becoming tacky. Do not walk on applied adhesive as this can deaden the bond.
4. Carefully walk or roll the flooring into the adhesive. Avoid trapping air beneath the sheet. **NOTE: While the Q-Bond is releasable, the dry-set application will grab the material and require full removal to reposition.**
5. Fold or tube remaining un-adhered half of the flooring back to the half-way point of the room.
6. Repeat adhesive application from steps 2 through 4 above for the remainder of the substrate.
7. Roll the flooring with a minimum 75 lb (34 kg) sectional floor roller.

## ADHESIVE CLEAN UP

### QBond One Adhesive

- Use a clean white cloth dampened with water to remove wet adhesive from floor covering and tools.
- Dried adhesive may require the use of mineral spirits applied to a clean white cloth (Follow manufacturer's precautions when using mineral spirits).

## FINISHING THE JOB

1. Carefully inspect for any fullness in the flooring. Re-trim if necessary. Flooring shall be lying flat. It is recommended that all exposed edges be covered. Install wood moldings or cove base around the perimeter to cover the space. Do not fasten or nail moldings through FiberFloor. Fasten into the wall.
2. Use transition moldings at doorways or where the new flooring meets an existing floor. Do not nail or fasten the molding through the flooring. Transition moldings shall be fastened to the substrate. If a transition molding must be installed directly on top of flooring, mark on the flooring where each fastener will be positioned, and drill or cut a hole larger than the size of the fastener. This is necessary when using the Floating Installation Method.
3. Do not move or roll furniture and appliances directly over floor. Always place plywood or hardboard panels on floor when moving furniture or appliances.
4. Furniture legs shall be equipped with proper size rests to prevent permanent indentations.

## CARE AND MAINTENANCE

- Check furniture to be sure the legs are equipped with proper rests and are of sufficient size with a minimum bearing surface of 1" square (or 1 1/8" diameter per 50-75lbs.) to prevent permanent indentations. Polished metal or non-staining, smooth plastic are recommended. Do not use felt pads.
- Use extreme caution when moving heavy furniture or appliance across the flooring. The use of plywood or hardwood panels to slide the furniture or appliances is recommended.
- Narrow-heeled shoes can damage the flooring causing permanent indentation that is not covered by the warranty.
- Light daily sweeping or vacuuming will help maintain the floors original gloss by removing any grit particles, which can affect the normal gloss. Sweep and / or vacuum (without a beater bar) any dirt or debris that can abrade or scratch the floor. Use a soft brush, dust mop, or vacuum with the beater bar turned off.
- Wipe up spills promptly and thoroughly with a clean, damp cloth. Spills are easier to remove if wiped up immediately.
- When necessary, wash the floor with a neutral pH floor cleaner such as ammonia diluted in water.
- Use non-staining walk-off mats at outside entrances to prevent dirt and debris from being tracked onto the floor. Discoloration of the flooring may occur from rubber backings and dyes used in floor mats and rugs. Consult the rug manufacturer to ensure their products are compatible with vinyl flooring.
- As with other household furnishings, repeated exposure to direct sunlight may cause bleaching, fading or discoloration. When possible, close drapes or blinds during peak sunlight hours to block direct sunlight.

## INSTALLATION IN CABINS AND VACATION HOMES

**NOTE:** FiberFloor can be installed in fully-enclosed buildings like vacation homes and cabins that may have HVAC controls turned off periodically. Adhere directly to the substrate using the Full-Spread-Permanent Application method detailed above. On-grade or above grade concrete substrates meeting the requirements detailed in the CONCRETE SUBSTRATES section and double layer wood constructed substrates detailed in the WOOD SUBSTRATES section are recommended for this application. Contact Tarkett Technical Services at (800)-899-8916 with any questions.

### Special Instructions

- Acclimate the flooring materials and adhesive in an indoor, climate controlled space to between 65°F and 85°F (18.3°C and 29.4°C) for 48 hours prior to installation.
- Maintain climate controls of between 65°F and 85°F (18.3°C and 29.4°C) with a relative humidity 40% and 60% for 48 hours prior to, during, and after the installation.
- Maintain a minimum substrate temperature of 60°F (15.6 °C) for 48 hours prior to, during, and after installation. Substrate temperature should be a minimum of 5°F higher than the dew point temperature
- When traffic will be present, maintain climate controls of between 65°F and 85°F (18.3°C and 29.4°C) with a relative humidity 40% and 60%. Restrict traffic any time the HVAC has not been in operation to protect the flooring.
- FiberFloor may only be installed in this application following the Full Spread Permanent Bond method.

## Tarkett North America

Technical Services Department  
30000 Aurora Road  
Solon, OH 44139  
800.899.8916 Fax 440.632.5643  
[info@tarkettna.com](mailto:info@tarkettna.com)

[www.tarkettna.com](http://www.tarkettna.com)